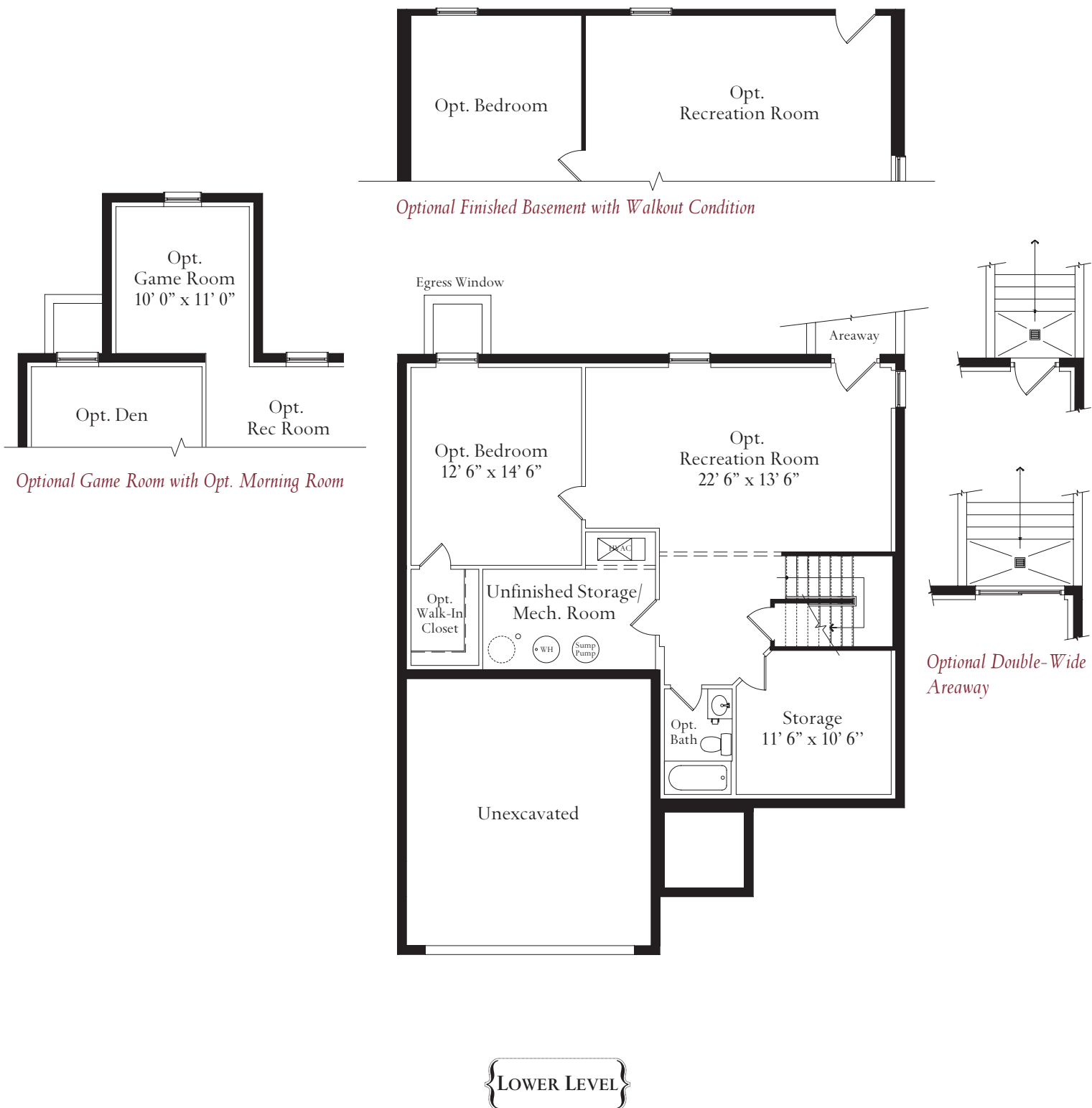


# The Montvale



{ Eastern Seaboard Stone to Grade }



{ Eastern Seaboard with Porch }



{ Cottage }



{ Craftsman }

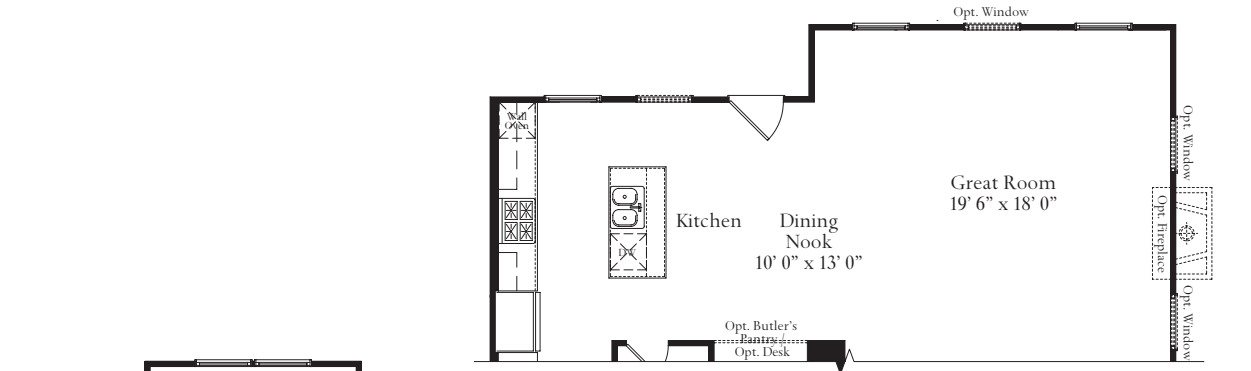
The Montvale offers a unique design for great entertaining and a comfortable retreat for day-to-day living. This inviting floor plan features many amenities on the main floor including a formal dining room, a centrally located powder room, and an open concept great room and kitchen area with a center island and a large walk-in pantry. A mud room is located off the two-car garage and includes a walk-in closet to accommodate all of your outdoor apparel and accessories. The main floor offers nine-foot ceilings throughout. Details such as the optional gas fireplace in the great room and the optional box ceiling in the dining room add charm and utility. The laundry room is conveniently located upstairs, along with a massive owner's suite, three additional bedrooms, and two full baths. The attention to detail and use of space makes this desirable home one-of-a-kind. The lower level offers options to finish the rec room, bathroom and den.

**ATLANTIC BUILDERS**  
EXPERIENCE THE DIFFERENCE

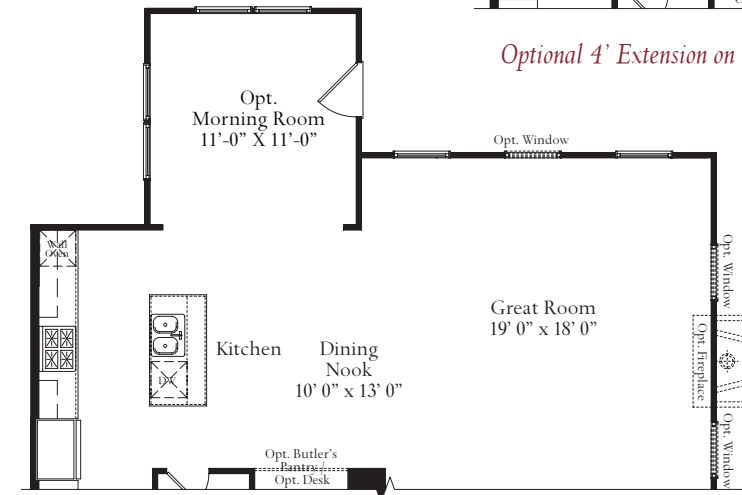


**ATLANTIC BUILDERS**  
EXPERIENCE THE DIFFERENCE

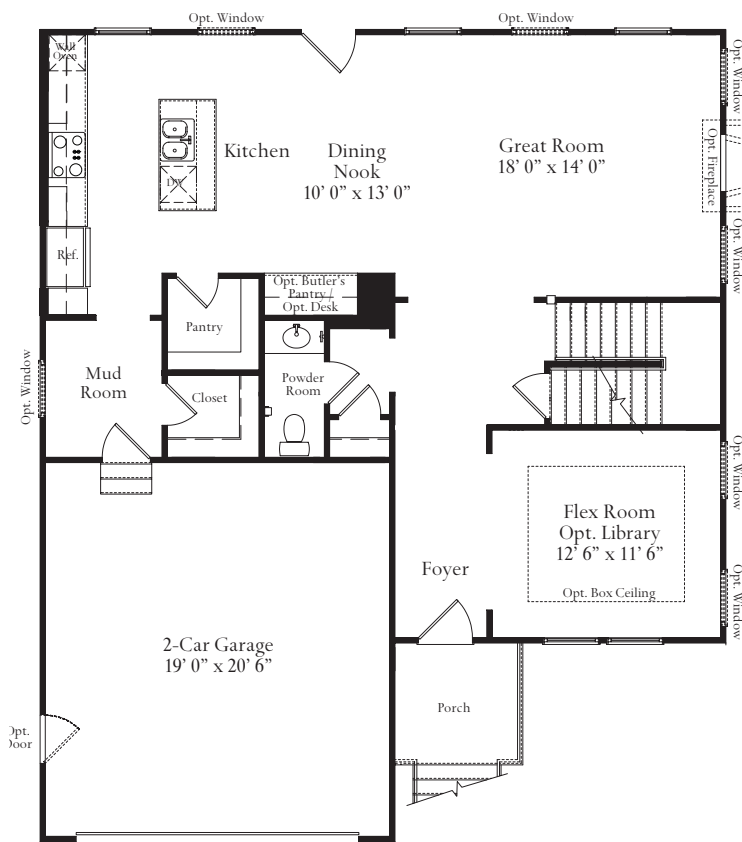
# The Montvale



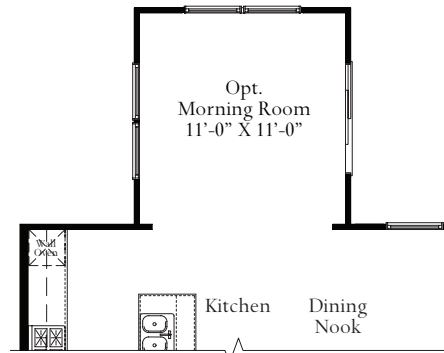
*Optional 4' Extension on Great Room*



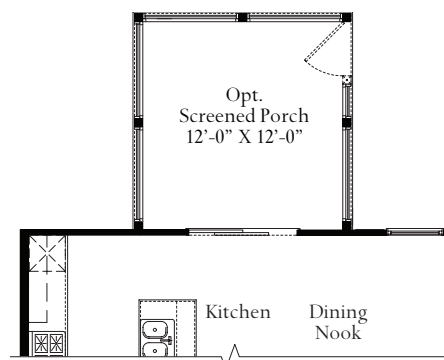
*Optional 4' Extension on Great Room with Morning Room*



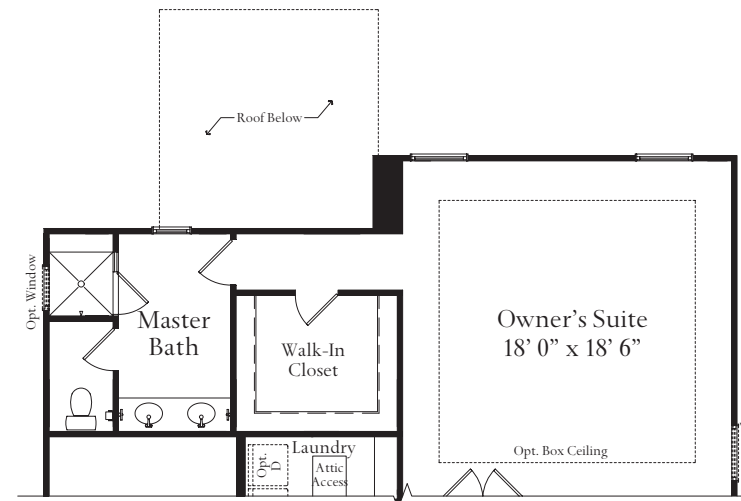
**MAIN LEVEL**



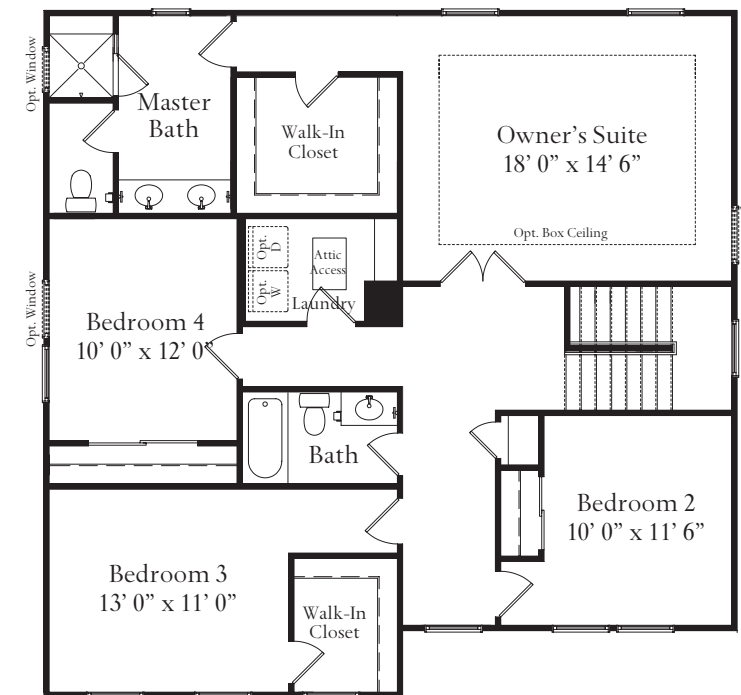
*Optional Morning Room*



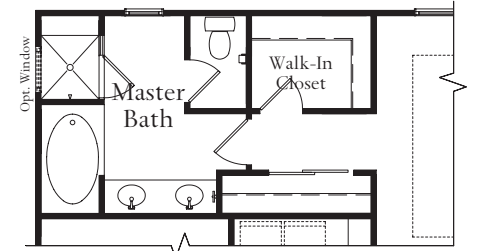
*Optional Screened Porch*



*Optional 4' Extension on Owner's Suite*



**UPPER LEVEL**



*Optional Luxury Owner's Bath*

These renderings and floorplans are conceptual only. Actual details may vary. This insert is for illustrative purposes only. Atlantic Builders' continuing research and development program means specifications and plans are subject to change without notice. Standard features vary per community. Please consult Community Sales Manager for details.